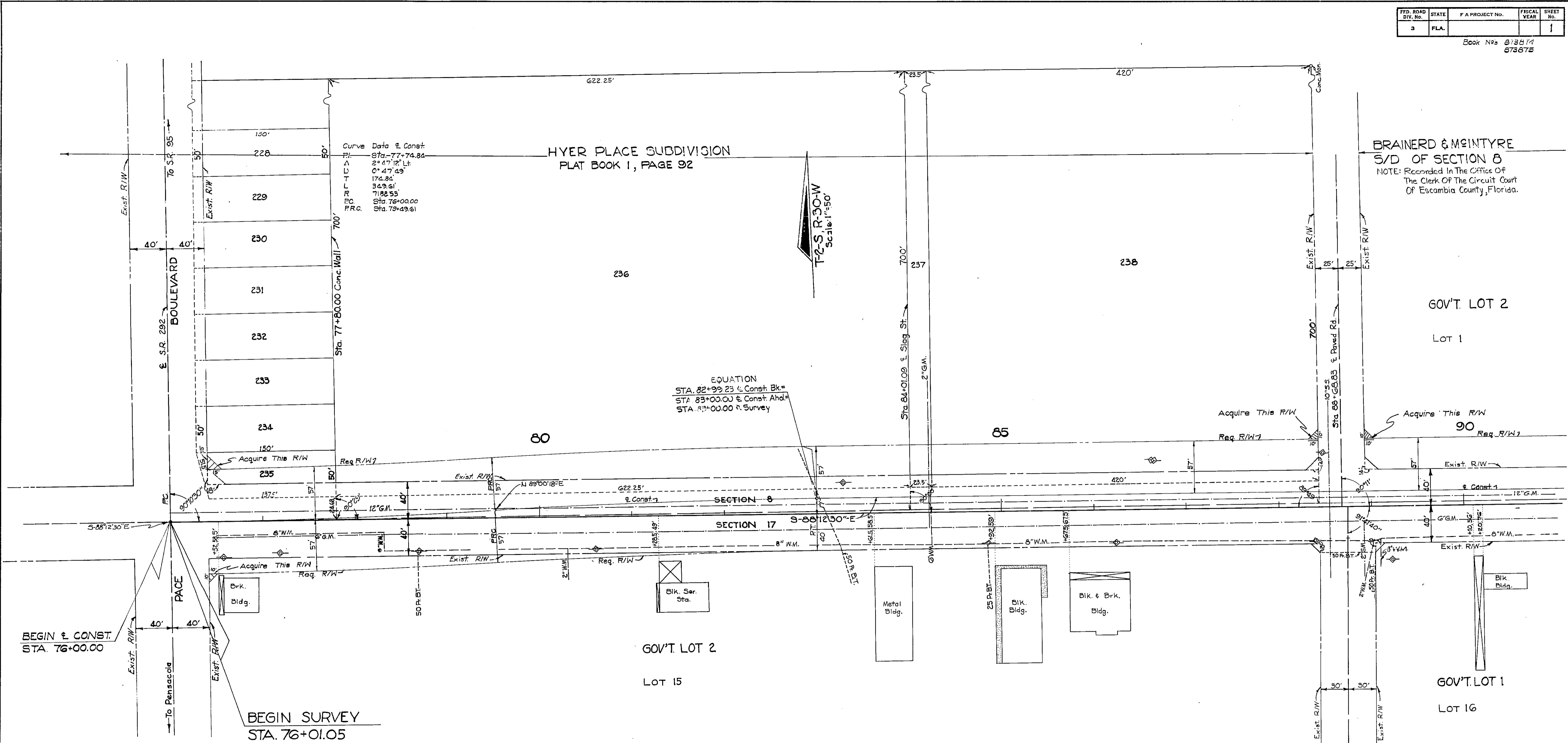


FED. ROAD DIV. NO.	STATE	F.A. PROJECT NO.	FISCAL YEAR	SHEET NO.
3	FLA.			1

Book Nos 873574  
873575



**BRAINERD & MCINTYRE**  
S/D OF SECTION 8  
NOTE: Recorded In The Office Of  
The Clerk Of The Circuit Court  
Of Escambia County, Florida.

EQUATION  
STA. 82+99.23 & Const. Bk. =  
STA. 83+00.00 & Const. Ahd. =  
STA. 83+00.00 & Survey

**BRAINERD & MCINTYRE S/D OF SEC. 17**  
NOTE: Recorded In The Office of The Clerk of The Circuit  
Court of Escambia County.

Curve Data & Const

PI	Sta. 81+24.45
Δ	2° 47' 12" Rt
DT	0° 47' 45"
T	174.84
L	349.61
R	718.22
PFC	Sta. 79+49.61
PT	Sta. 82+99.23

- UTILITY OWNERS**
- Water Main - City of Pensacola
  - Telephone Cable - Southern Bell Tele. Co.
  - Gas Main - (Lt. of E) - United Gas Co.
  - Sanitary Sewer - City of Pensacola
  - Gas Main - (Crt. of E) - City of Pensacola
  - Power Poles - Gulf Power Co.
  - Telephone Poles - Southern Bell Tele. Co.

**Property was never acquired.  
Disregard Req. R/W line.**

BI No 311422

STATE OF FLORIDA  
DEPARTMENT OF TRANSPORTATION

**RIGHT OF WAY MAP**

STATE ROAD NO. 5-289-A ESCAMBIA COUNTY

BY	DATE	APPROVED BY	DATE
DRAWN	H.E.B.	2-10-72	
TRACED	H.E.B.	2-20-72	
CHECKED			
COMPARED			
INDEXED			

SECTION. 48004-2504 SHEET 1 OF 2

REVISION	BY	DATE
Water Main	LLC & I	5-29-72
adj. bearing	HC-MHC	1-15-73
& Const & P.V.I	TL	1-4-73

FAIRFIELD DRIVE ← FROM PACE BLVD. TO OLD POTTERY  
PLAN: ROAD

**BRAINERD & MEINTYRE S/D OF SECTION 8**  
 NOTE: Recorded In The Office Of The Clerk Of The Circuit Court Of Escambia County, Florida.

**T-2-S R-30-W**  
 Scale: 1" = 50'

Curve Data & Const.  
 P.I. Sta. 100+58.94  
 Δ 42°40'26" Lt.  
 D 13'18.58"  
 T 168.08'  
 L 320.47'  
 R 430.27'  
 P.C. Sta. 98+90.86  
 P.T. Sta. 102+11.33

P.I. Sta. 100+40.50  
 Δ 42°40'26" Lt.  
 D 15°00"  
 T 149.64'  
 L 284.49'  
 R 383.07'  
 P.C. Sta. 98+90.86  
 P.T. Sta. 101+79.35

**END SURVEY**  
 STA. 107+00.00

EQUATION  
 P.T. Sta. 105+28.15 Bk. =  
 Sta. 105+28.15 Ah.

SUBDIVISION IN SEC. 6  
 DEED BOOK 33, PAGE 252

**END & CONST.**  
 STA. 102+11.33 (E CONST.) =  
 STA. 102+18.87 (E SURVEY)

P.I. Sta. 104+93.42  
 Δ 39°35'24" Rt.  
 D 2°00"  
 T 89.80'  
 L 178.53'  
 R 284.93'  
 P.C. Sta. 103+43.62  
 P.T. Sta. 105+28.15 Bk. =  
 Sta. 105+28.15 Ah.

**BRAINERD & MEINTYRE S/D OF SEC. 17**  
 NOTE: Recorded In The Office Of The Clerk Of The Circuit Court Of Escambia County, Florida.

**Property was never acquired. Disregard Req. R/W line.**

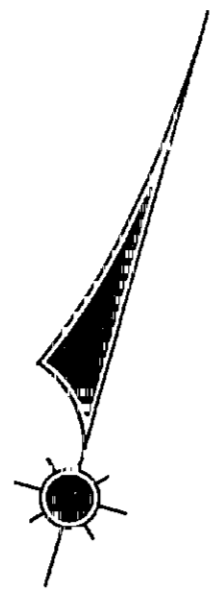
STATE OF FLORIDA  
 DEPARTMENT OF TRANSPORTATION  
**RIGHT OF WAY MAP**  
 STATE ROAD No. 5-289-AE SCAMBLIA COUNTY

BY	DATE	APPROVED BY	DATE
H.E.B.	2-10-78	<i>E.W.H.</i>	10-24-78
H.E.B.	2-20-78	<i>Thomas C. Russ</i>	10-27-78

REVISION BY DATE

Rev. Existing R/W	J.L.B.	11-18-19
Water main	H.G. & L.C.	8-29-74
Rev. Dim.	H.G. & L.C.	1-16-73
Adv. R/W	H.G. & L.C.	1-16-73
E. Const. & R/W	H.G. & L.C.	1-16-73

SECTION. 48004-2504 SHEET 2 OF 2



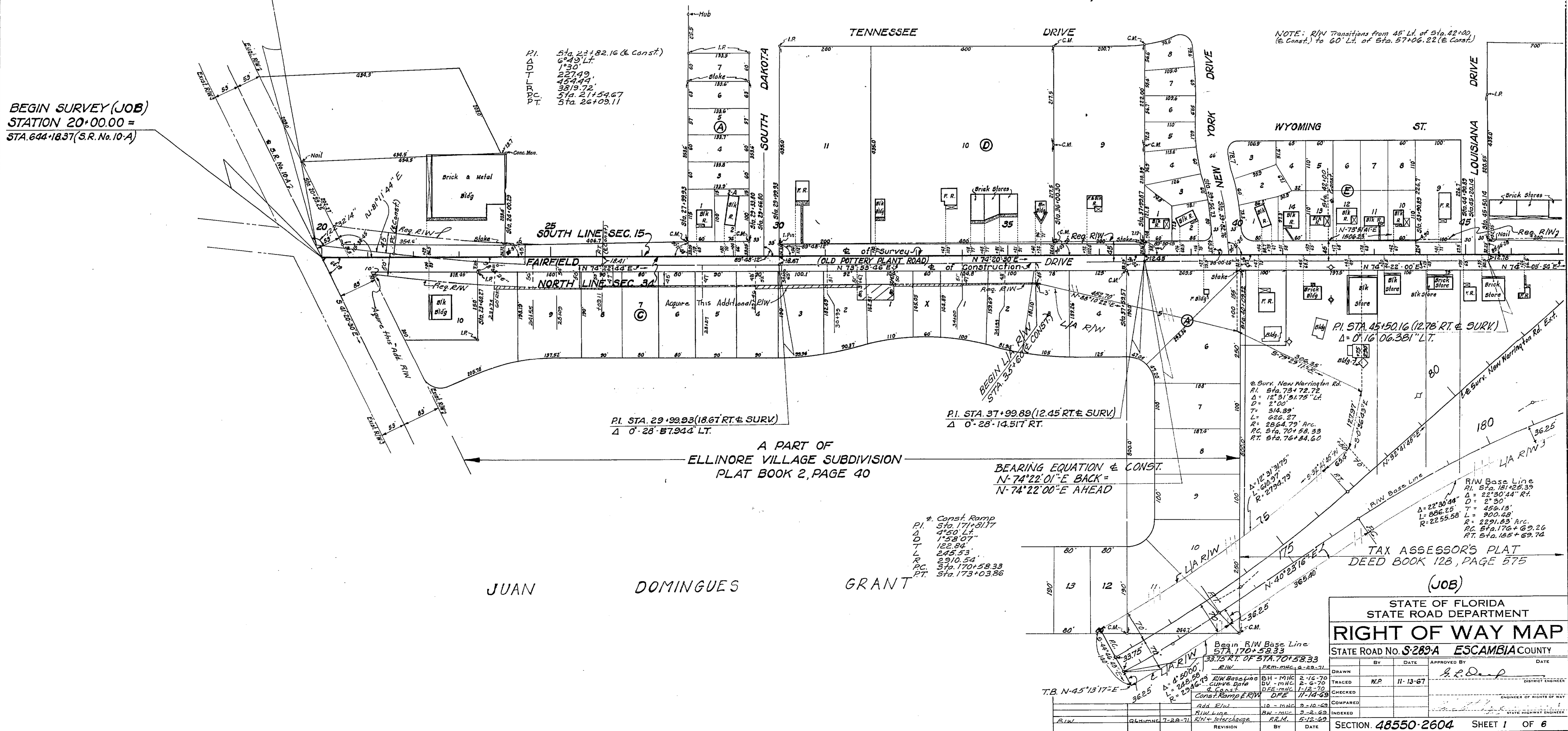
BEGIN CONSTRUCTION @  
 STA. 19+83.62 =  
 STA. 643+85.87 (S.R. 10-A)

T-2-S, R-30-W  
 SCALE: 1" = 100'

A PART OF  
 FIRST ADDITION  
 TO  
 OAKCREST SUBDIVISION  
 PLAT BOOK 3, PAGES 44 & 68

BEGIN SURVEY (JOB)  
 STATION 20+00.00 =  
 STA. 644+18.37 (S.R. No. 10-A)

NOTE: R/W Transitions from 45' Lt. of Sta. 42+00  
 (E Const.) to 60' Lt. of Sta. 57+06.22 (E Const.)



P.I. STA. 23+82.16 (E Const.)  
 6°49' LT.  
 1°30'  
 237.49  
 454.44  
 3819.72  
 Sta. 21+54.67  
 Sta. 26+09.11

P.I. STA. 29+99.93 (18.67 RT. & SURV.)  
 Δ 0°-28'-57.944" LT.

P.I. STA. 37+99.89 (12.45 RT. & SURV.)  
 Δ 0°-28'-14.517" RT.

BEARING EQUATION & CONST.  
 N-74°22'01"E BACK =  
 N-74°22'00"E AHEAD

Const. Ramp  
 P.I. Sta. 171+81.17  
 Δ 4°50' LT.  
 D 159.07  
 T 122.84  
 L 245.53  
 R.C. Sta. 170+58.33  
 RT. Sta. 173+03.86

@ Surv. New Warrington Rd.  
 P.I. Sta. 75+72.72  
 Δ = 12°31'51.75" Lt.  
 D = 2°00'  
 T = 314.39  
 L = 626.27  
 R.C. Sta. 70+58.33  
 RT. Sta. 76+84.60

R/W Base Line  
 P.I. Sta. 181+25.39  
 Δ = 22°30'44" Rt.  
 D = 2°30'  
 T = 456.15  
 L = 900.48  
 R.C. Sta. 176+69.26  
 RT. Sta. 185+69.74

TAX ASSESSOR'S PLAT  
 DEED BOOK 128, PAGE 575

A PART OF  
 ELLINORE VILLAGE SUBDIVISION  
 PLAT BOOK 2, PAGE 40

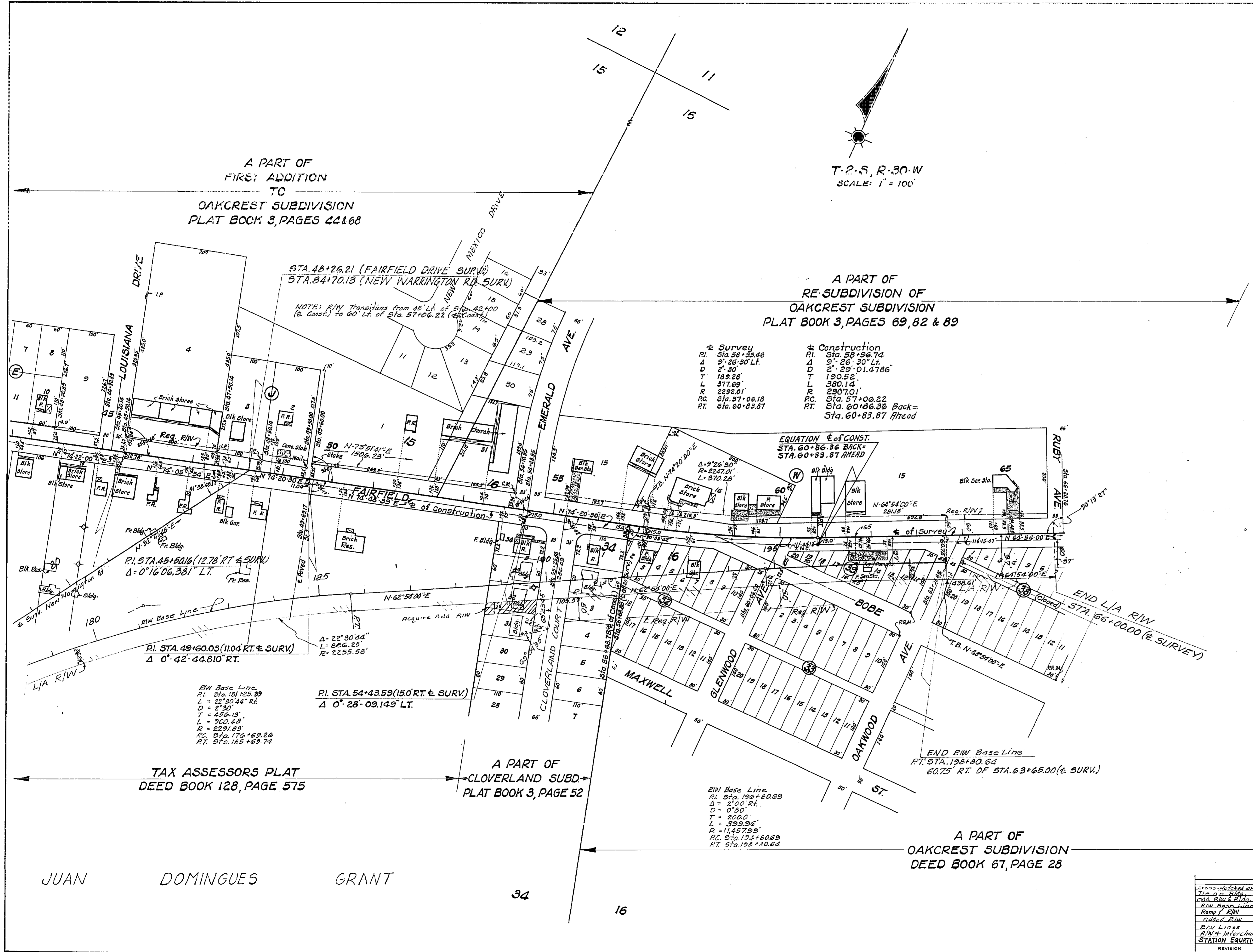
JUAN DOMINGUES GRANT

STATE OF FLORIDA STATE ROAD DEPARTMENT			
<b>RIGHT OF WAY MAP</b>			
STATE ROAD NO. S-289A ESCAMBA COUNTY			
BY	DATE	APPROVED BY	DATE
W.P.	11-13-67	<i>[Signature]</i>	
TRACED			
CHECKED			
COMPARED			
INDEXED			
SECTION 48550-2604 SHEET 1 OF 6			

A PART OF  
FIRST ADDITION  
TO  
OAKCREST SUBDIVISION  
PLAT BOOK 3, PAGES 44 & 68

A PART OF  
RE-SUBDIVISION OF  
OAKCREST SUBDIVISION  
PLAT BOOK 3, PAGES 69, 82 & 89

T-2-S, R-30-W  
SCALE: 1" = 100'



Survey		Construction	
PI.	Sta. 58+55.46	PI.	Sta. 58+96.74
Δ	9° 26' 30" LT.	Δ	9° 26' 30" LT.
D	2' 30"	D	2' 29' 01.4786"
T	182.28'	T	190.52'
L	377.69'	L	380.14'
R	2292.01'	R	2297.01'
PC.	Sta. 57+06.18	PC.	Sta. 57+06.22
PT.	Sta. 60+83.87	PT.	Sta. 60+86.36 Back = Sta. 60+83.87 Ahead

EQUATION OF CONST.  
STA. 60+86.36 BACK =  
STA. 60+83.87 AHEAD

R/W Base Line  
PI. Sta. 181+25.39  
Δ = 22° 30' 44" RT.  
D = 2' 30"  
T = 456.15'  
L = 900.48'  
R = 2291.89'  
PC. Sta. 176+69.26  
PT. Sta. 185+69.74

PI. STA. 54+43.59 (150 RT. OF SURV.)  
Δ 0° 28' 09.149" LT.

TAX ASSESSORS PLAT  
DEED BOOK 128, PAGE 575

A PART OF  
CLOVERLAND SUBD  
PLAT BOOK 3, PAGE 52

R/W Base Line  
PI. Sta. 192+60.89  
Δ = 2' 00" RT.  
D = 0' 30"  
T = 200.0'  
L = 399.96'  
R = 11457.99'  
PC. Sta. 192+60.89  
PT. Sta. 192+20.64

A PART OF  
OAKCREST SUBDIVISION  
DEED BOOK 67, PAGE 28

(JOB)

STATE OF FLORIDA  
STATE ROAD DEPARTMENT

### RIGHT OF WAY MAP

STATE ROAD No. S-289-A ESCAMBIA COUNTY

DR.	DATE	BY	DATE
DR. PLAN	8-13-70		
SP. PLAN	7-7-70		
ADD. PLAN	4-2-70		
R/W PLAN	3-23-70		
R/W PLAN	2-12-70		
R/W PLAN	11-14-69		
R/W PLAN	3-12-69		
R/W PLAN	3-2-69		
R/W PLAN	5-12-69		
R/W PLAN	1-10-69		

SECTION. 48550-2604 SHEET 2 OF 6

JUAN DOMINGUES GRANT

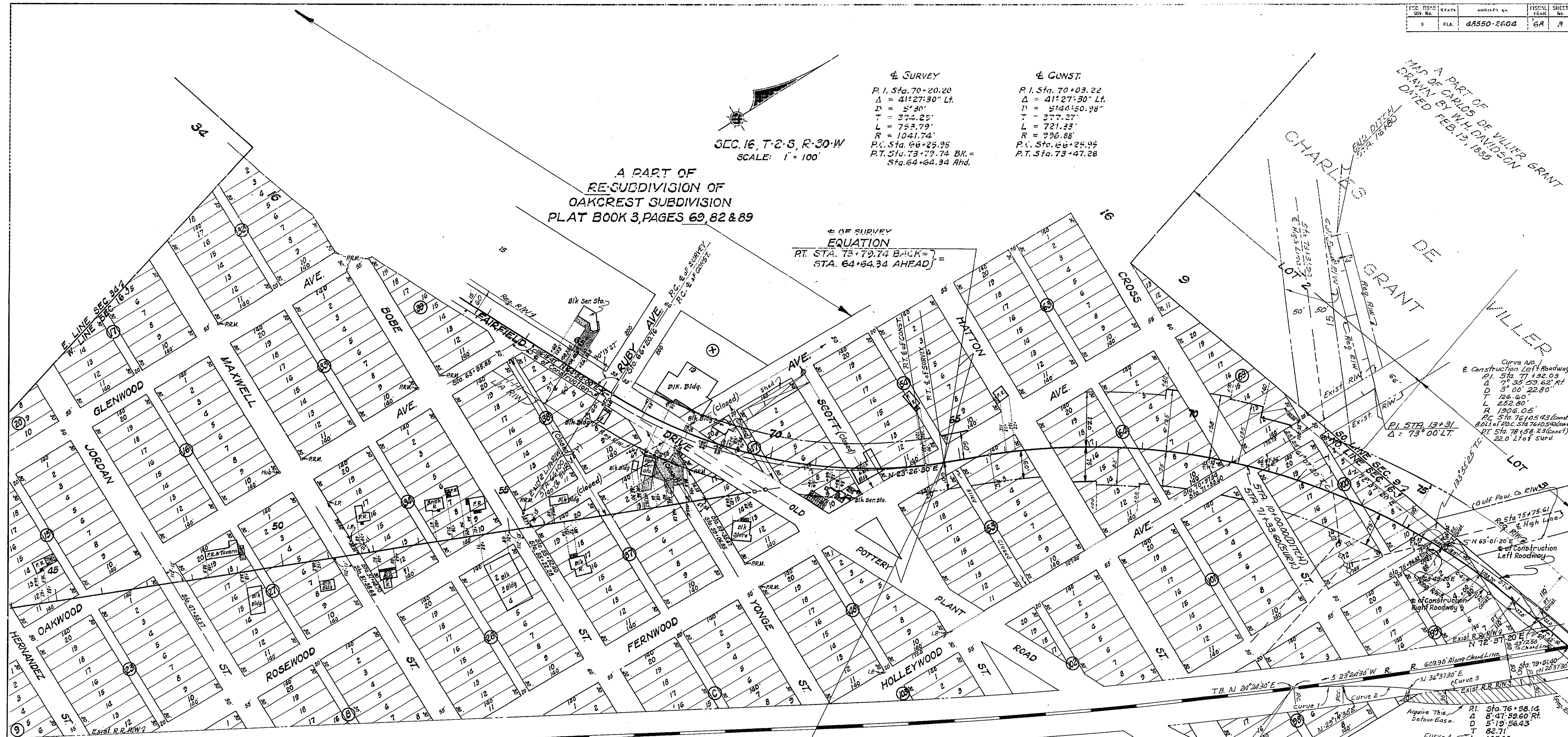
SEC. 16, T-2-S, R-30-W  
SCALE: 1" = 100'

± SURVEY  
P.I. Sta. 70+20.20  
Δ = 41°27'30" Lt.  
D = 5°30'  
T = 224.25'  
L = 753.79'  
R = 1041.74'  
P.C. Sta. 66+25.95  
P.T. Sta. 73+79.74 BK. = Sta. 64+64.34 Ahd.

± CONST.  
P.I. Sta. 70+03.22  
Δ = 41°27'30" Lt.  
D = 5°44'50.98"  
T = 377.27'  
L = 721.33'  
R = 996.88'  
P.C. Sta. 66+25.95  
P.T. Sta. 73+47.28

A PART OF RE-SUBDIVISION OF OAKCREST SUBDIVISION PLAT BOOK 3, PAGES 69, 82 & 89

± OF SURVEY EQUATION  
PT. STA. 73+79.74 BACK =  
STA. 64+64.34 AHEAD =



A PART OF MAP OF CARLOS DE VILLER GRANT DRAWN BY W.H. DAVIDSON DATED FEB. 13, 1855

Curve No. 1  
± Construction Left Roadway  
P.I. Sta. 77+32.03  
Δ = 5°35'53.52" Rt.  
D = 5°00'22.80"  
T = 126.60'  
L = 252.80'  
R = 1906.05'  
P.C. Sta. 76+105.43 (Const)  
P.O.T. of P.C. Sta. 74+105.80 (Const)  
P.T. Sta. 78+158.26 (Const)  
220.21 of Surv.

PI STA. 13+31  
Δ = 73°00' LT.

EQUATION  
STA. 73+86.92 BACK (± of CONST.) =  
PT. STA. 64+64.34 AHEAD (± of SURV.) =

PI. Sta. 72+21.55  
Δ 49°10'50" Rt.  
D 4°00'  
T 655.64'  
L 1229.52'  
R 1432.69'  
P.C. Sta. 65+65.91  
P.T. Sta. 77+25.43

PI. Sta. 76+58.14  
Δ 8°47'59.60" Rt.  
D 5°19'56.43"  
T 82.71'  
L 165.03'  
R 1074.88'  
P.C. Sta. 75+75.43 (± Const) =  
180 Rt. of P.C. Sta. 75+75.43 (± Const)  
P.T. Sta. 77+40.46  
NOTE:  
See Alignment above for Variable Dist. between Surv. & Const. Lines from 180 Rt. P.C. of Const. to 220 Rt. of Rt. of Surv.

A PART OF OAKCREST SUBDIVISION DEED BOOK 67, PAGE 28

BEGIN DETOUR STA. 0+100.00

STATE OF FLORIDA  
STATE ROAD DEPARTMENT  
RIGHT OF WAY MAP  
STATE ROAD No. 5-289-A ESCAMBIA COUNTY

Curve Data On RR Detour		
Curve 1	Curve 2	Curve 3
P.I. Sta. 0154.00	P.I. Sta. 1179.99	P.I. Sta. 3185.11
Δ 4°50' Et.	Δ 7°23' Et.	Δ 16°00' Lt.
D 4°28'40"	D 5°10'	D 6°00'
T 54.00'	T 71.55'	T 154.27'
L 107.94'	L 112.90'	L 266.79'
R 955.39'	R 1108.94'	R 955.39'
P.C. Sta. 0100.00	P.C. Sta. 1107.94	P.C. Sta. 3130.84
P.T. Sta. 1407.24	P.T. Sta. 2150.84	P.T. Sta. 3177.63

Detour (RR)	BH-MHC	2-18-70	BY	DATE	APPROVED BY	DATE
L/A-R/W	DEE-MHC	11-13-69	TRACED	W.P.	11-13-67	
High Line	PRM-MHC	2-18-69	CHECKED			
Lot 2	BH-MHC	2-11-69	COMPARED			
R/W LINES	BH	2-5-69	INDEXED			
NEW SURVEY LINE	BH	1-8-69				
REVISION	BY	DATE				

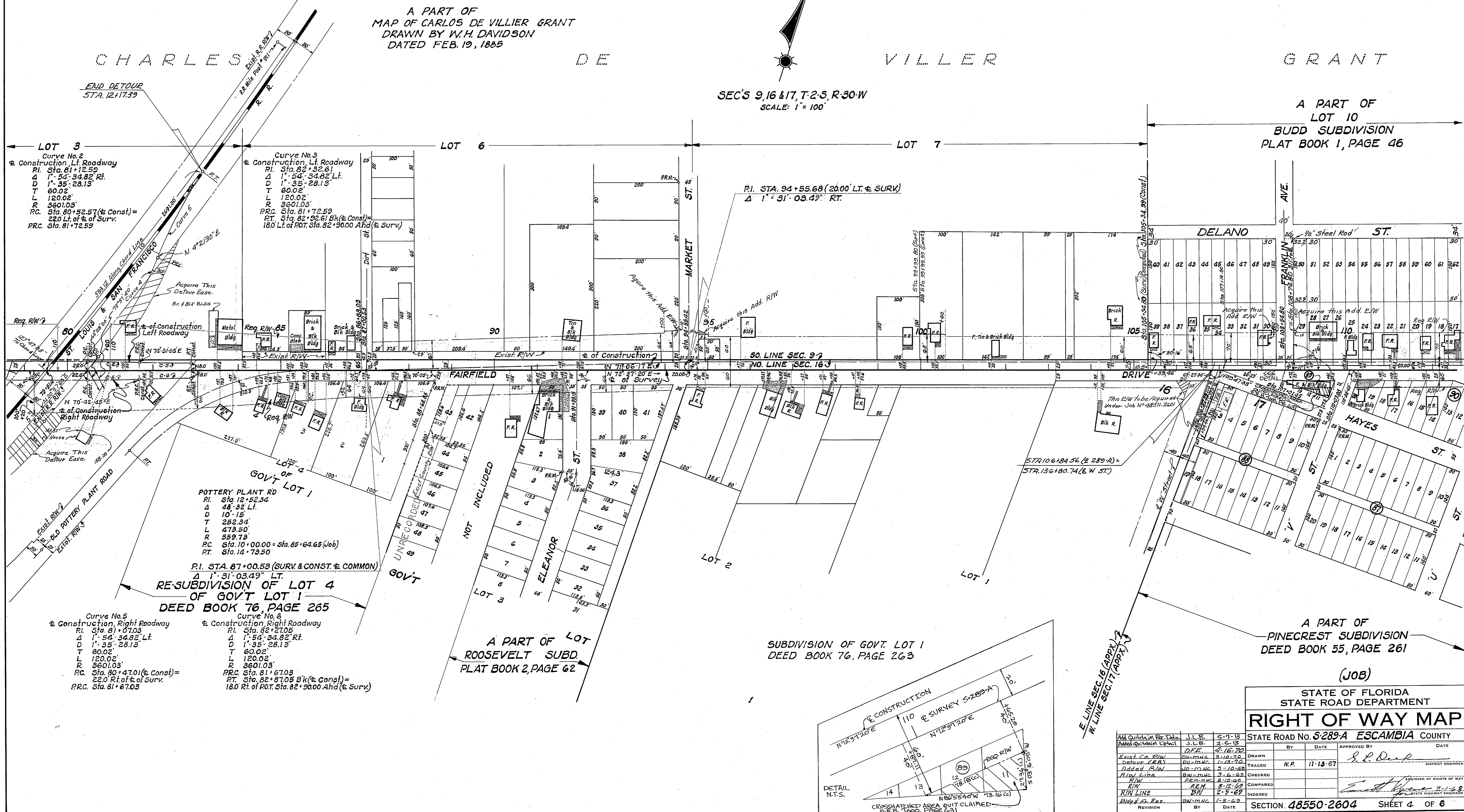
4 of 6  
48550 2604

Curve Data on RR Detour  
 CURVE 4  
 P.I. Sta. 8153.24  
 Δ 16°16' L.  
 D 6°00'  
 T 136.53'  
 L 271.22'  
 R 325.33'  
 P.C. Sta. 7416.71  
 P.R.C. Sta. 9187.93

CURVE 5  
 P.I. Sta. 11102.94  
 Δ 9°45' RT.  
 D 4°15'  
 T 115.01'  
 L 228.46'  
 R 1348.45'  
 P.R.C. Sta. 9187.93  
 P.T. Sta. 12117.39

A PART OF  
 MAP OF CARLOS DE VILLIER GRANT  
 DRAWN BY W.H. DAVIDSON  
 DATED FEB. 19, 1885

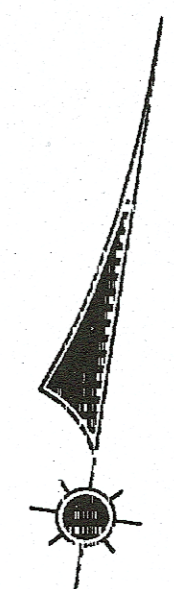
SEC'S 9, 16 & 17, T-2-S, R-30-W  
 SCALE: 1" = 100'



STATE OF FLORIDA STATE ROAD DEPARTMENT				
<b>RIGHT OF WAY MAP</b>				
STATE ROAD No. 5289-A ESCAMBIA COUNTY				
DATE	BY	DATE	APPROVED BY	DATE
5-1-68	J.L.B.	2-5-68	S.L. Deak	DISTRICT ENGINEER
2-16-70	D.F.E.	1-13-70		
3-10-70	D.W.M.H.C.	3-10-69		
3-10-69	W.O.M.H.C.	3-10-69		
3-10-69	B.W.M.H.C.	3-10-69		
3-10-69	R.M.H.C.	3-10-69		
3-10-69	B.W.	2-5-69		
1-5-69	B.W.M.H.C.	1-5-69		

SECTION 48550-2604 SHEET 4 OF 6

FAIRFIELD DRIVE (S.R. No. 10-A TO PAGE BLVD)



CHARLES DE VILLER GRANT

A PART OF LOT 11 HYER PLACE SUBDIVISION PLAT BOOK 1, PAGE 92

SECS 9, 8 & 17, T-2-S, R-30-W  
SCALE: 1" = 100'

END CONSTRUCTION  $\pm$  AT  
PT. STA. 135+05.70 =  
2.00' LT. OF SURV. STA. 135+00.00

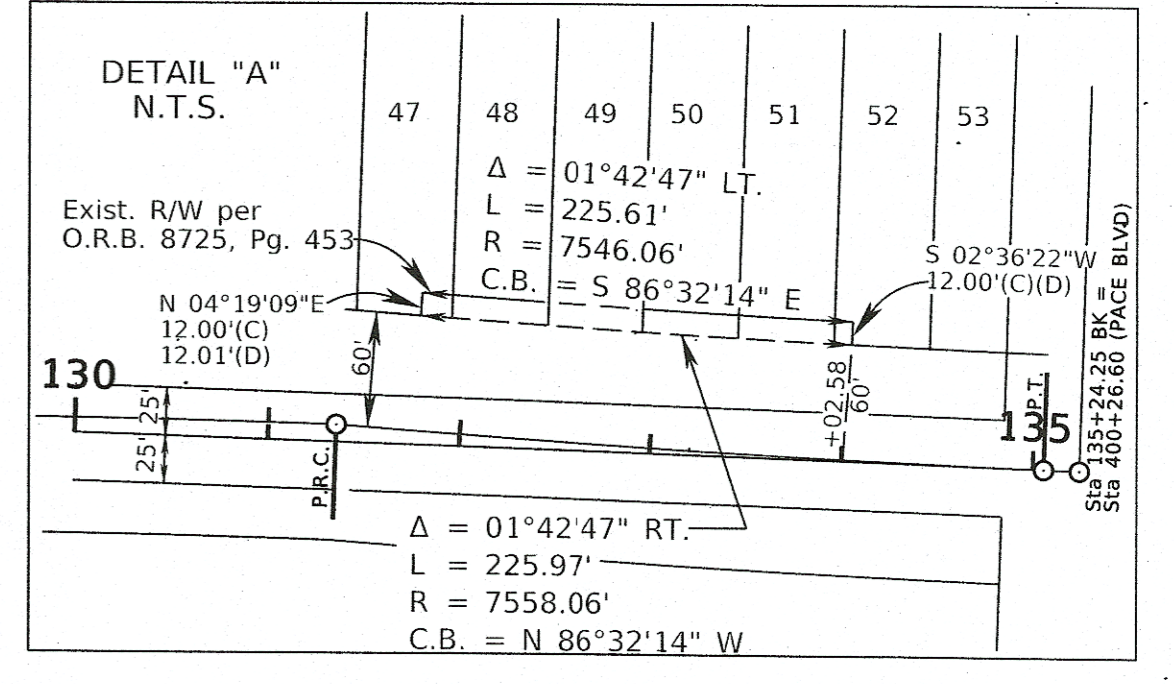
END SURVEY (JOB)  
STATION 135+24.25 =  
STA. 400+26.60 (PACE BLVD)

$\phi$  OF CONSTRUCTION  
P.I. Sta. 133+20.57  
 $\Delta$  2°-47'-07.25" Lt.  
D 0'-45'-07.5879"  
T 185.2068'  
L 370.3373'  
R 7618.0631"  
P.C. Sta. 131+35.36  
P.T. Sta. 135+05.70

$\phi$  OF CONSTRUCTION  
P.I. Sta. 121+09.18  
 $\Delta$  19°-12'-30" Rt.  
D 5'-00"  
T 193.96'  
L 384.17'  
R 1146.28'  
P.C. Sta. 119+15.22  
P.T. Sta. 122+99.39

$\phi$  OF SURVEY  
P.I. Sta. 121+05.54  
 $\Delta$  19°-12'-30" Rt.  
D 9'-30"  
T 102.11'  
L 202.19'  
R 603.805'  
P.C. Sta. 120+03.37  
P.T. Sta. 122+05.56

$\phi$  OF CONSTRUCTION  
P.I. Sta. 129+50.23  
 $\Delta$  2°-47'-07.25" Rt.  
D 0'-45'-07.5879"  
T 185.2068'  
L 370.3380'  
R 7618.0809"  
P.C. Sta. 127+65.03  
P.T. Sta. 131+35.36



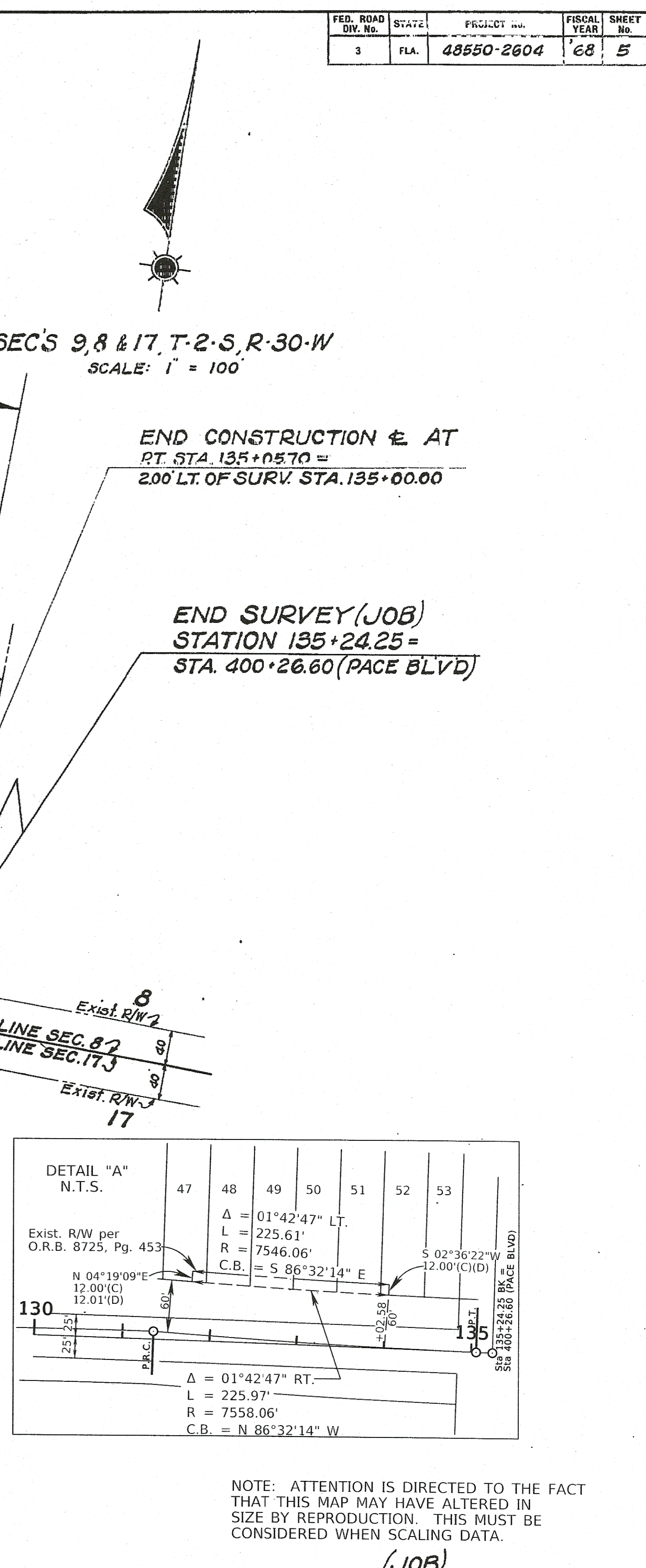
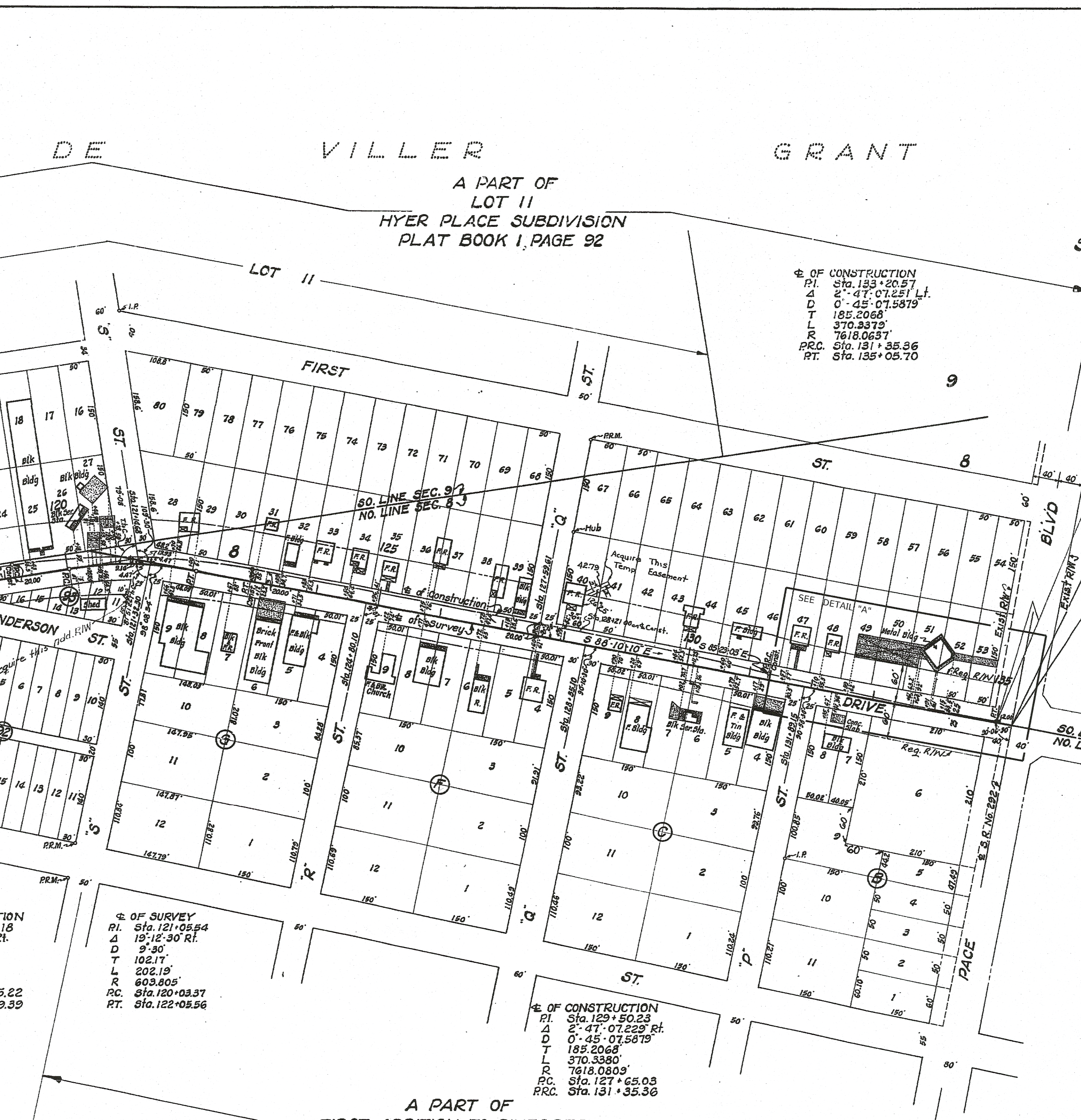
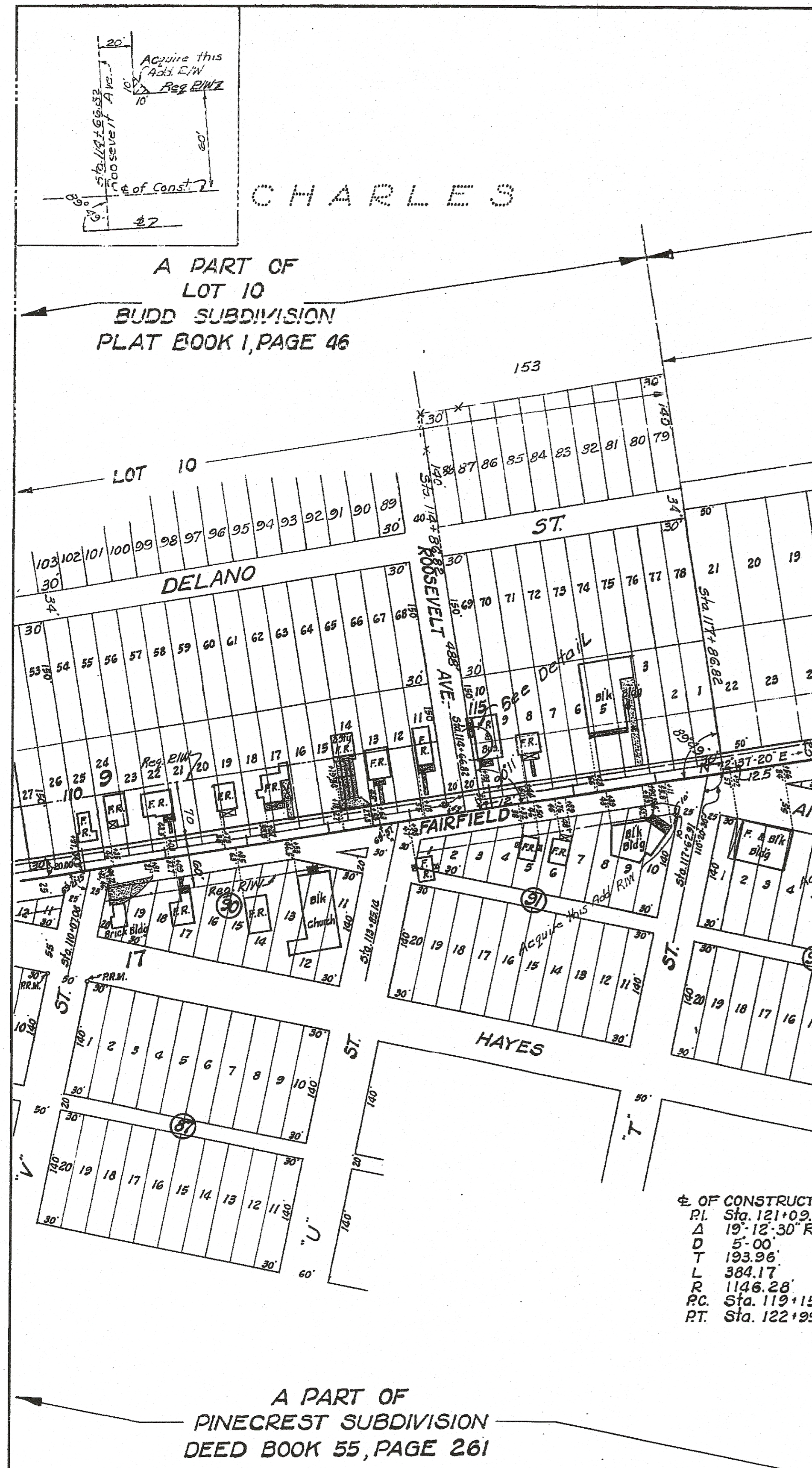
NOTE: ATTENTION IS DIRECTED TO THE FACT THAT THIS MAP MAY HAVE ALTERED IN SIZE BY REPRODUCTION. THIS MUST BE CONSIDERED WHEN SCALING DATA.

(JOB)

STATE OF FLORIDA  
STATE ROAD DEPARTMENT  
**RIGHT OF WAY MAP**  
STATE ROAD No. S289A ESCAMBIA COUNTY

REVISION	BY	DATE	SECTION 48550-2604	SHEET 5 OF 6
Rev. Exist. R/W	F.D.O.T.	11-15-22		
Temp. Eas.	GN.M.C.	5-27-72		
	D.F.E.	4-16-70		
Added P.W.	RIS-MHC	3-5-70		
R/W Lines	W.O.-MHC	2-10-52		
R/W	BN-MHC	3-2-69		
Angles	P.R.M.-MHC	5-18-59		
		1-16-59		

FAIRFIELD DRIVE (S.R. No. 10-A TO PACE BLVD)





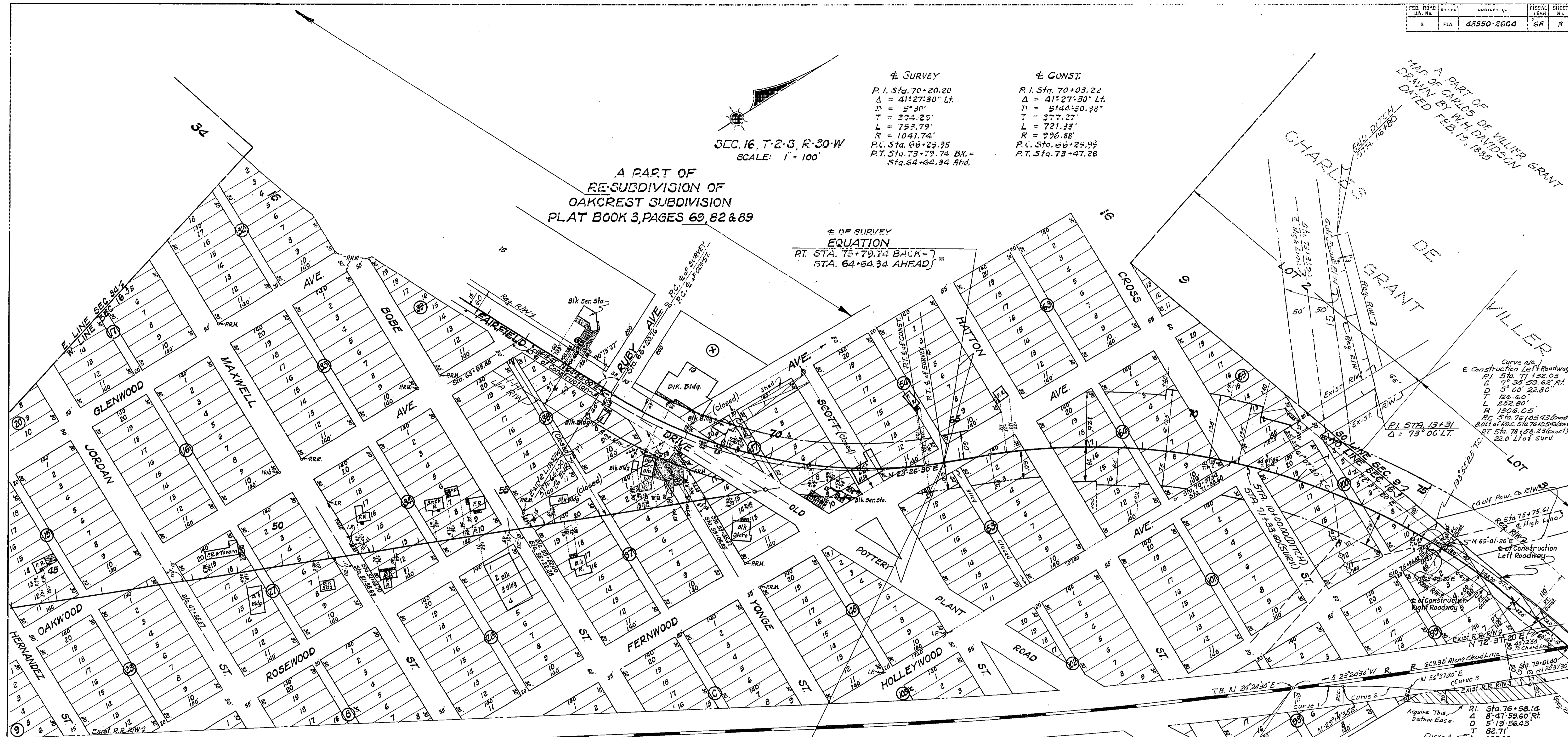
SEC. 16, T-2-S, R-30-W  
SCALE: 1" = 100'

± SURVEY  
P.I. Sta. 70+20.20  
Δ = 41°27'30" Lt.  
D = 5°30'  
T = 224.25'  
L = 753.79'  
R = 1041.74'  
P.C. Sta. 66+25.95  
P.T. Sta. 73+79.74 BK. = Sta. 64+64.34 Ahd.

± CONST.  
P.I. Sta. 70+03.22  
Δ = 41°27'30" Lt.  
D = 5°44'50.98"  
T = 377.27'  
L = 721.33'  
R = 996.88'  
P.C. Sta. 66+25.95  
P.T. Sta. 73+47.28

A PART OF RE-SUBDIVISION OF OAKCREST SUBDIVISION PLAT BOOK 3, PAGES 69, 82 & 89

± OF SURVEY EQUATION  
PT. STA. 73+79.74 BACK =  
STA. 64+64.34 AHEAD =



Curve No. 1  
± Construction Left Roadway  
P.I. Sta. 77+32.03  
Δ = 5°35'53.52" Rt.  
D = 5°00'22.80"  
T = 126.60'  
L = 252.80'  
R = 1906.05'  
P.C. Sta. 76+105.43 (Const)  
P.T. of P.C. Sta. 74+105.82 (Const)  
P.T. Sta. 78+158.21 (Const)  
22.0 L of Surv.

EQUATION  
STA. 73+86.92 BACK (± of CONST) =  
PT. STA. 64+64.34 AHEAD (± of SURV.) =

P.I. Sta. 72+21.55  
Δ = 49°10'50" Rt.  
D = 4°00'  
T = 655.64'  
L = 1229.52'  
R = 1432.69'  
P.C. Sta. 65+65.91  
P.T. Sta. 77+25.43

Curve 2  
P.I. Sta. 76+58.14  
Δ = 8°47'59.60" Rt.  
D = 5°19'56.43"  
T = 82.71'  
L = 165.03'  
R = 1074.88'  
P.C. Sta. 75+75.43 (± Const) =  
180 Rt. of P.C. Sta. 75+75.43 (± Const)  
P.T. Sta. 77+40.46  
NOTE:  
See Alignment above for Variable Dist. between Surv. & Const. Lines from 180 Rt. P.C. of Const. to 220 Rt. of Rt. of Surv.

A PART OF OAKCREST SUBDIVISION DEED BOOK 67, PAGE 28

Curve Data On RR Detour

Curve 1	Curve 2	Curve 3
P.I. Sta. 0154.00	P.I. Sta. 1179.99	P.I. Sta. 3185.11
Δ = 4°50' Et.	Δ = 7°23' Et.	Δ = 16°00' Lt.
D = 4°28'40"	D = 5°10'	D = 6°00'
T = 54.00'	T = 71.55'	T = 154.27'
L = 107.94'	L = 112.90'	L = 266.79'
R = 1279.91'	R = 1108.94'	R = 955.39'
P.C. Sta. 0100.00	P.C. Sta. 1107.94	P.C. Sta. 3130.84
P.T. Sta. 1407.24	P.T. Sta. 2150.84	P.T. Sta. 3177.63

Detour (RR)	BH-MHC	2-18-70	BY	DATE	APPROVED BY	DATE
L/A-R/W	DEE-MHC	11-13-69	TRACED	W.P.	11-13-67	
R/W	PRM-MHC	2-18-69	CHECKED			
High Line	DEE-MHC	2-26-69	COMPARED			
Lot 2	BH-MHC	2-11-69	INDEXED			
R/W LINES	BH	2-5-69				
NEW SURVEY LINE	BH	1-8-69				
REVISION	BY	DATE				

STATE OF FLORIDA  
STATE ROAD DEPARTMENT  
**RIGHT OF WAY MAP**  
STATE ROAD No. 5289-A ESCAMBIA COUNTY

SECTION 48550-2604 SHEET 3 OF 6

